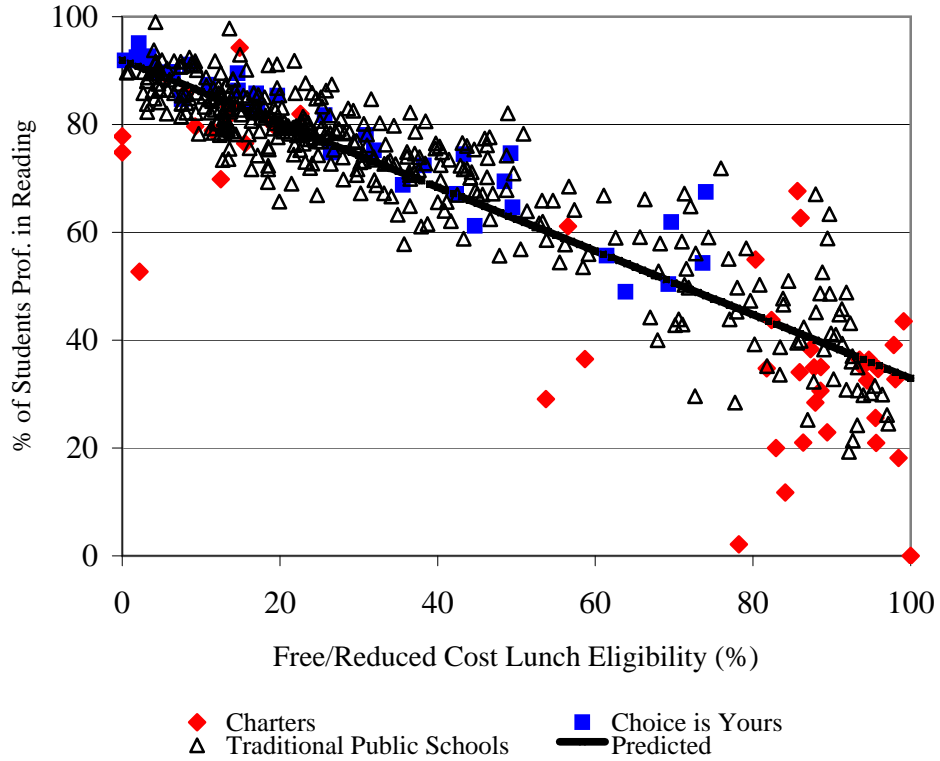


**Chart 11: Poverty and Reading Proficiency Rates in Twin Cities Elementary Schools, 2007-08**  
 (simple correlation =  $-0.91$ )



**School Performance by School Type**

	<u>% Performing Better Than Expected Given Poverty Rate</u>	<u>% Performing Worse Than Expected Given Poverty Rate</u>
Charter	24	76
Choice is Yours	79	21
Traditional	54	46